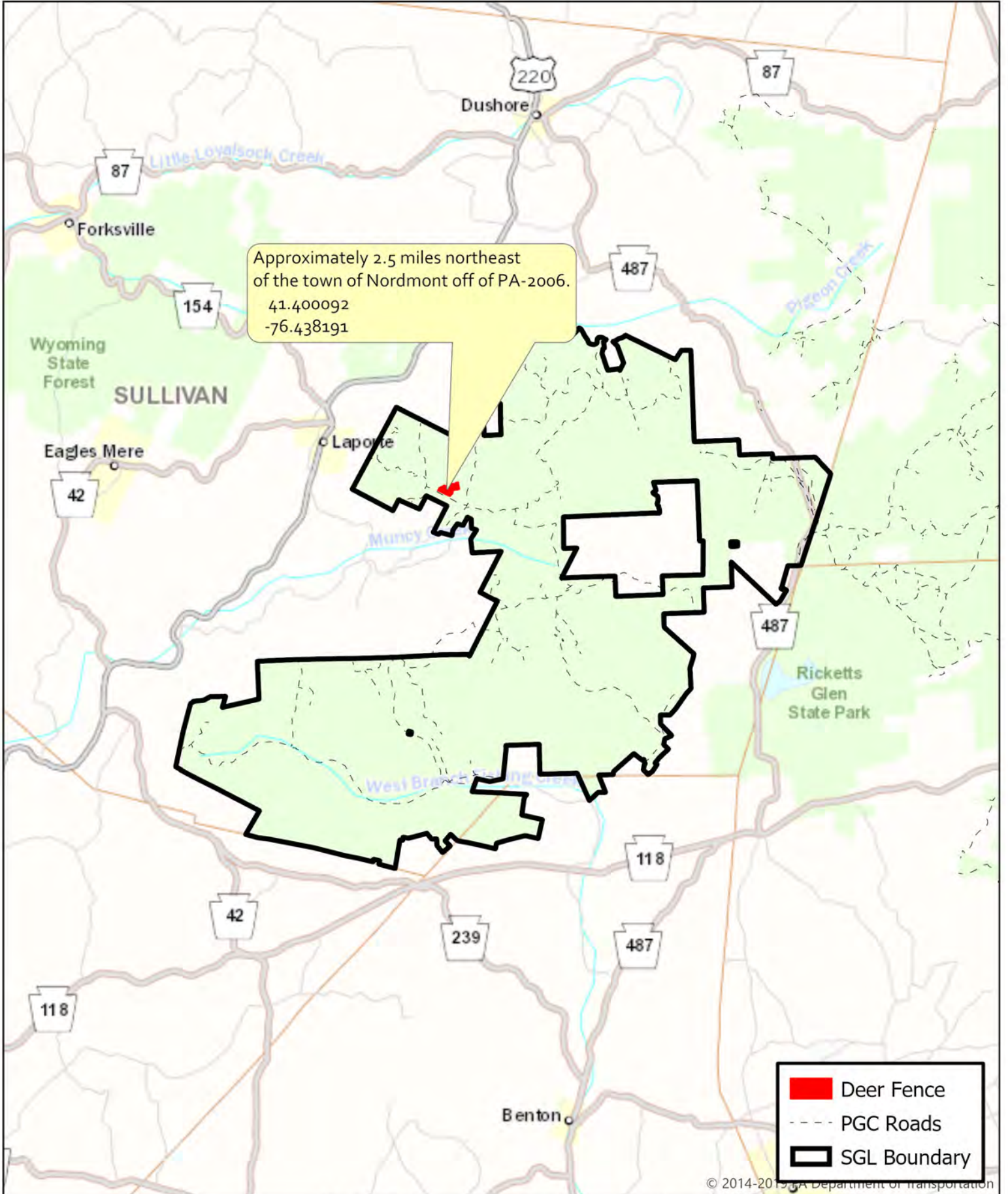

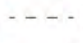



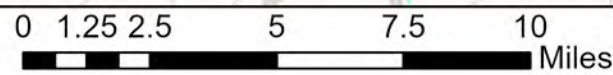
# Glass Dutchman Fence Removal Location Map



Approximately 2.5 miles northeast  
of the town of Nordmont off of PA-2006.  
41.400092  
-76.438191

-  Deer Fence
-  PGC Roads
-  SGL Boundary

© 2014-2015 WVA Department of Transportation





# Glass Dutchman Fence Removals

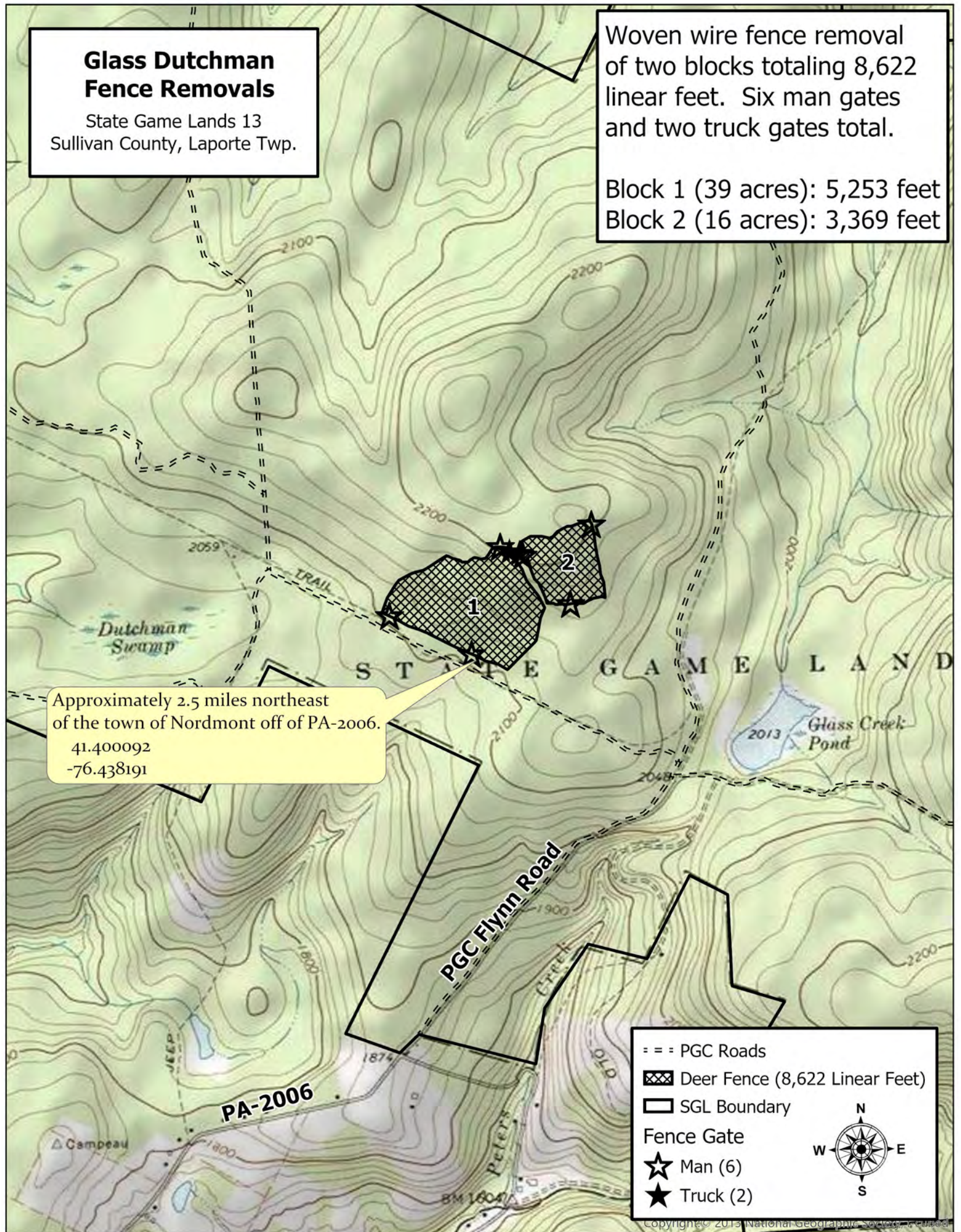
State Game Lands 13  
Sullivan County, Laporte Twp.

Woven wire fence removal  
of two blocks totaling 8,622  
linear feet. Six man gates  
and two truck gates total.

Block 1 (39 acres): 5,253 feet  
Block 2 (16 acres): 3,369 feet

Approximately 2.5 miles northeast  
of the town of Nordmont off of PA-2006.

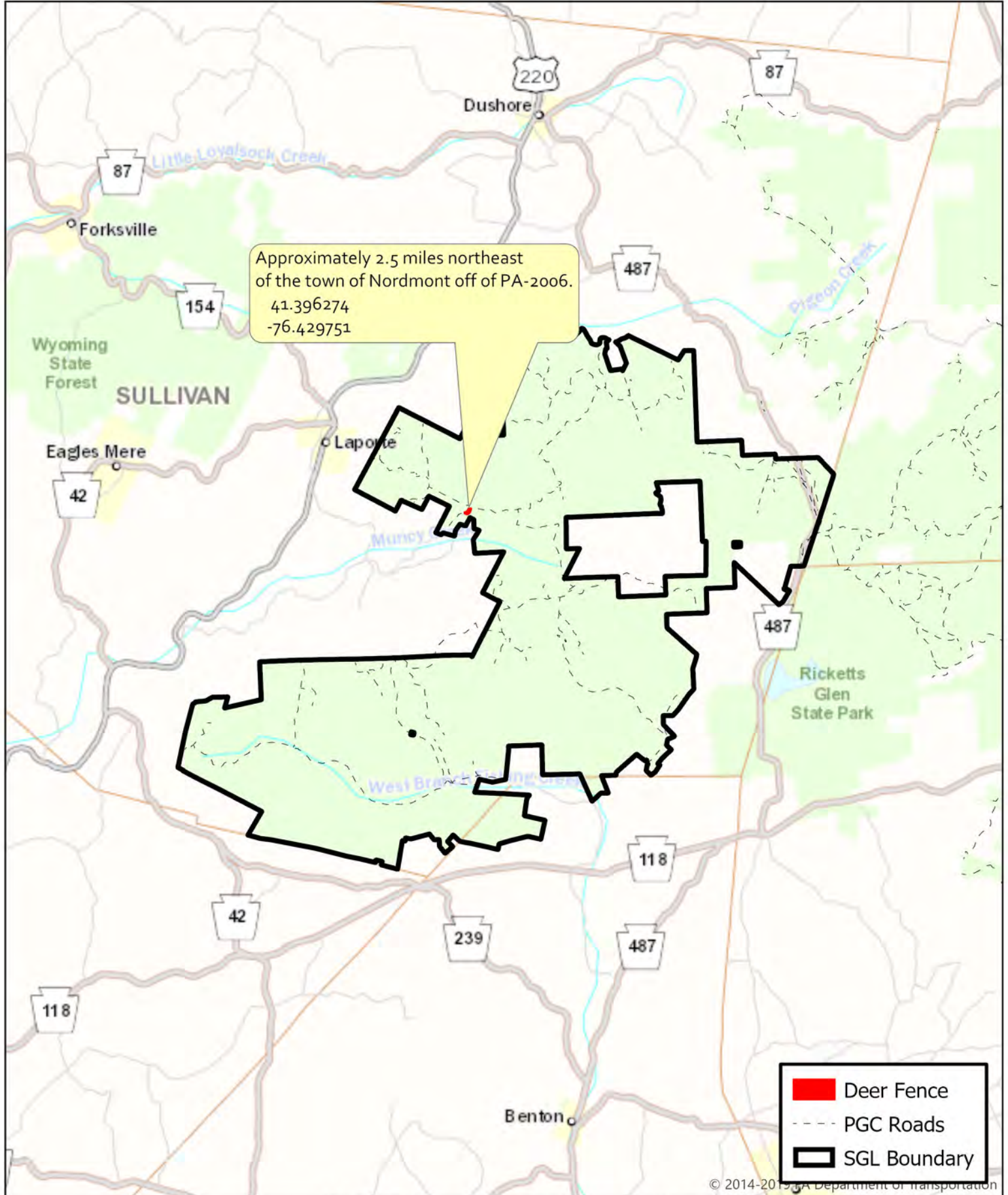
41.400092  
-76.438191



=== PGC Roads  
[Cross-hatched box] Deer Fence (8,622 Linear Feet)  
[Solid line box] SGL Boundary  
Fence Gate  
☆ Man (6)  
★ Truck (2)



# Salt Lick Fence Removal Location Map





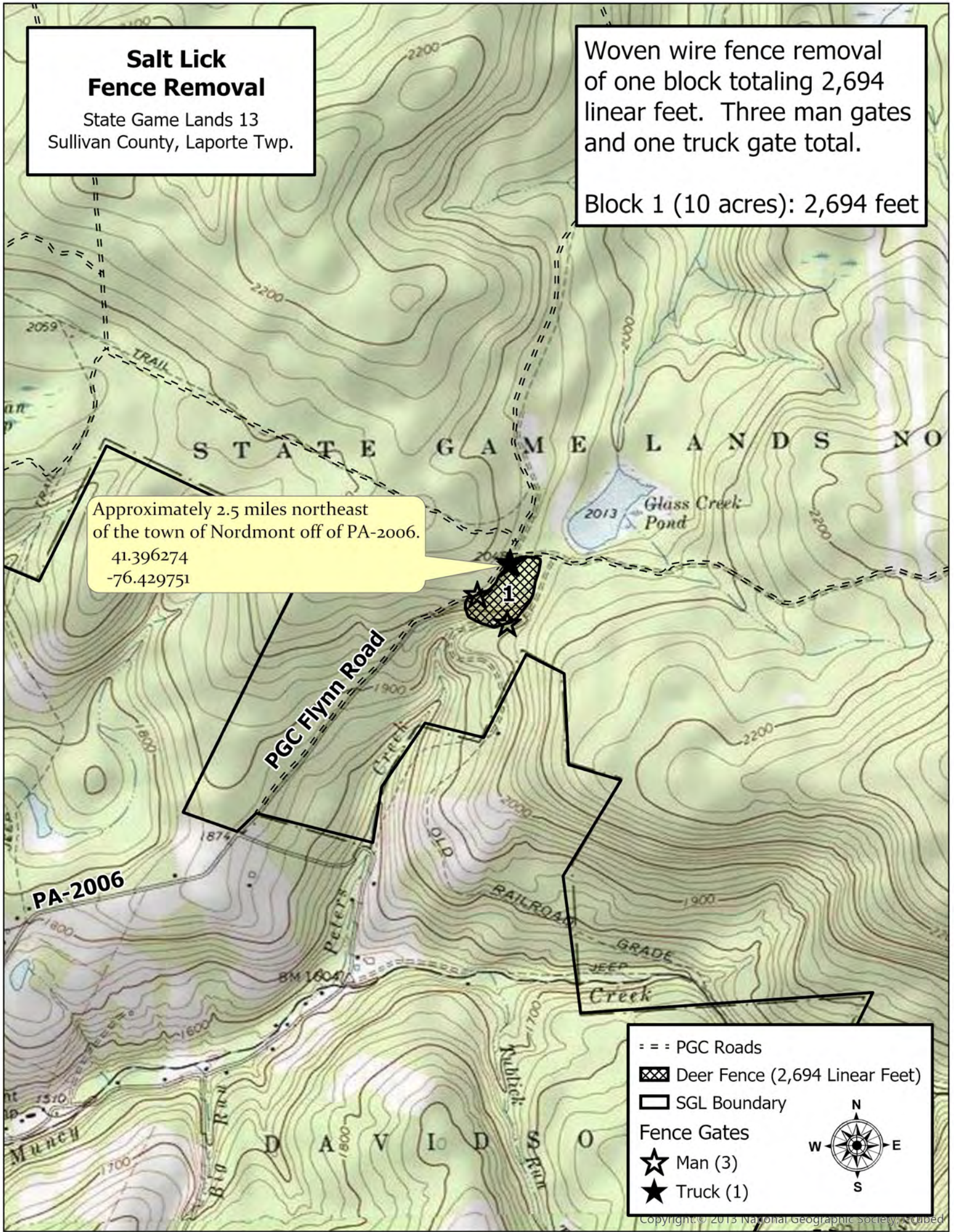
# Salt Lick Fence Removal

State Game Lands 13  
Sullivan County, Laporte Twp.

Woven wire fence removal  
of one block totaling 2,694  
linear feet. Three man gates  
and one truck gate total.

Block 1 (10 acres): 2,694 feet

Approximately 2.5 miles northeast  
of the town of Nordmont off of PA-2006.  
41.396274  
-76.429751



=== PGC Roads

▣ Deer Fence (2,694 Linear Feet)

▭ SGL Boundary

Fence Gates

☆ Man (3)

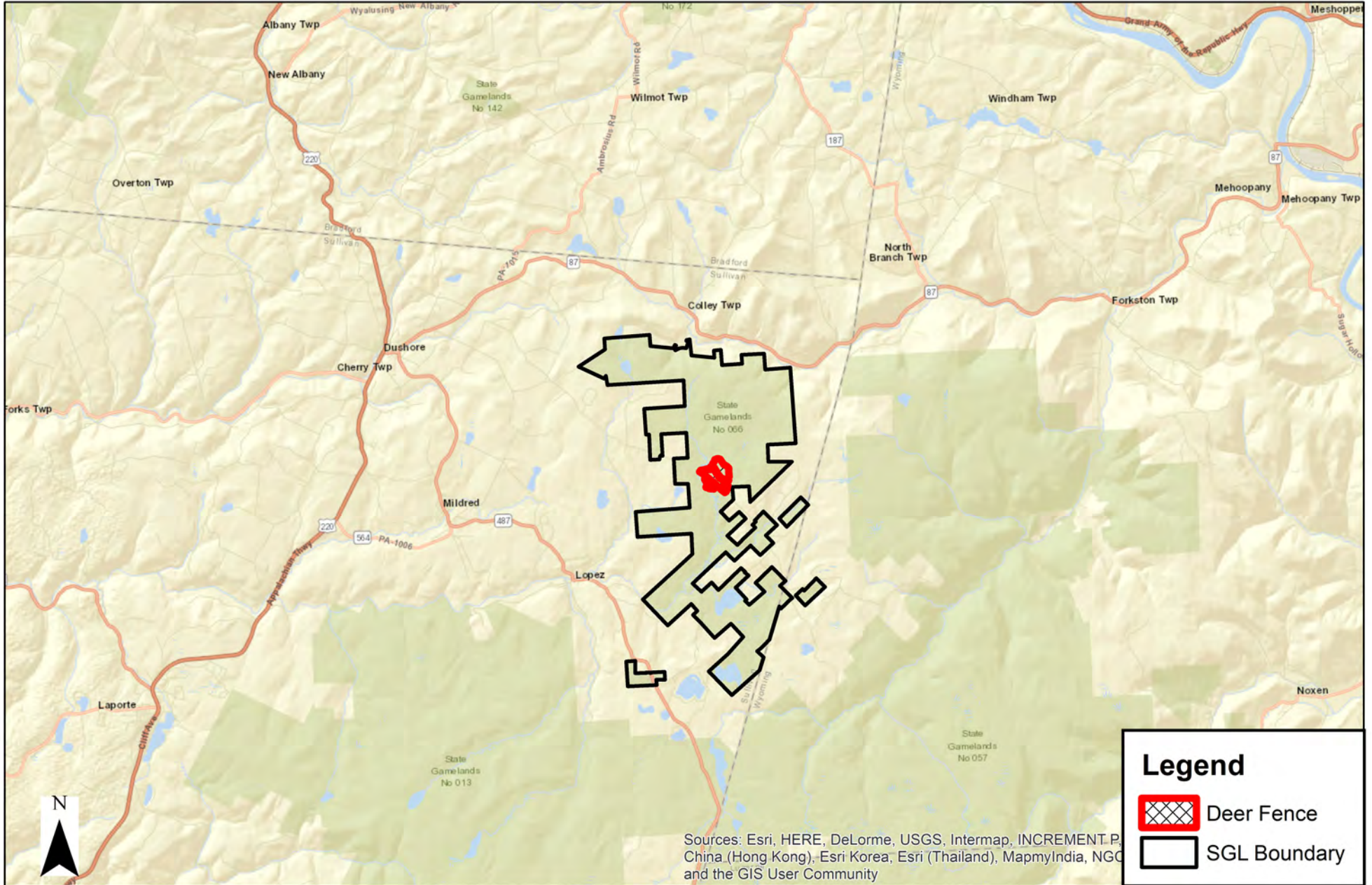
★ Truck (1)



# Pine Marsh Fence Removal Location Map

Block 1: 7,008 Feet (56 Acres)  
Block 2: 4,265 Feet (18 Acres)  
Block 3: 8,287 Feet (61 Acres)

Total Feet To Remove:  
19,560



Sources: Esri, HERE, DeLorme, USGS, Intermap, INCREMENT P, China (Hong Kong), Esri Korea, Esri (Thailand), MapmyIndia, NGC and the GIS User Community

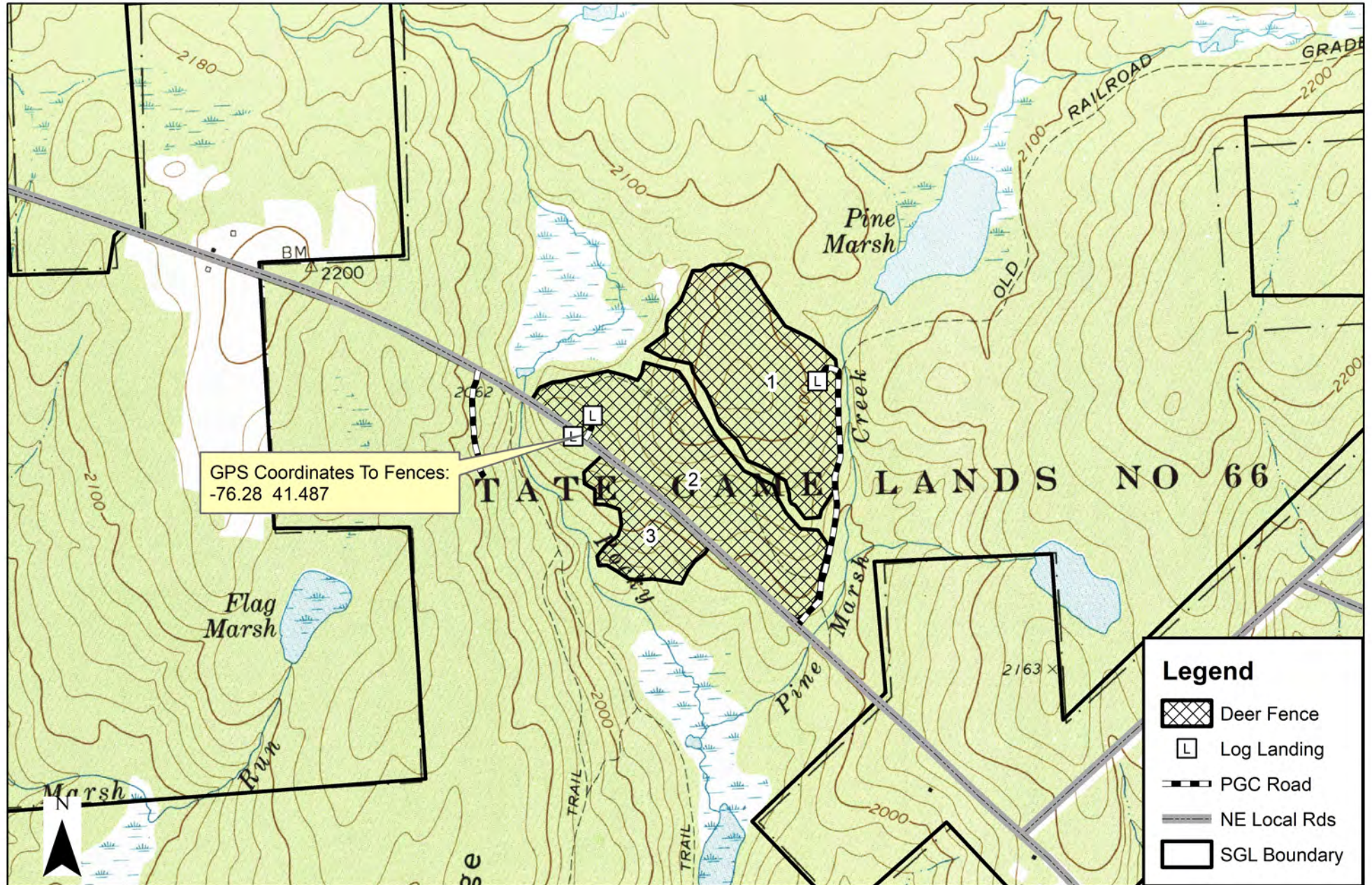




# Pine Marsh Fence Removal Topo Map

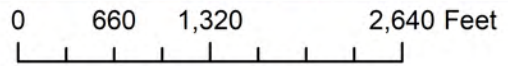
Block 1: 7,008 Feet (56 Acres)  
Block 2: 4,265 Feet (18 Acres)  
Block 3: 8,287 Feet (61 Acres)

Total Feet To Remove:  
19,560



**Legend**

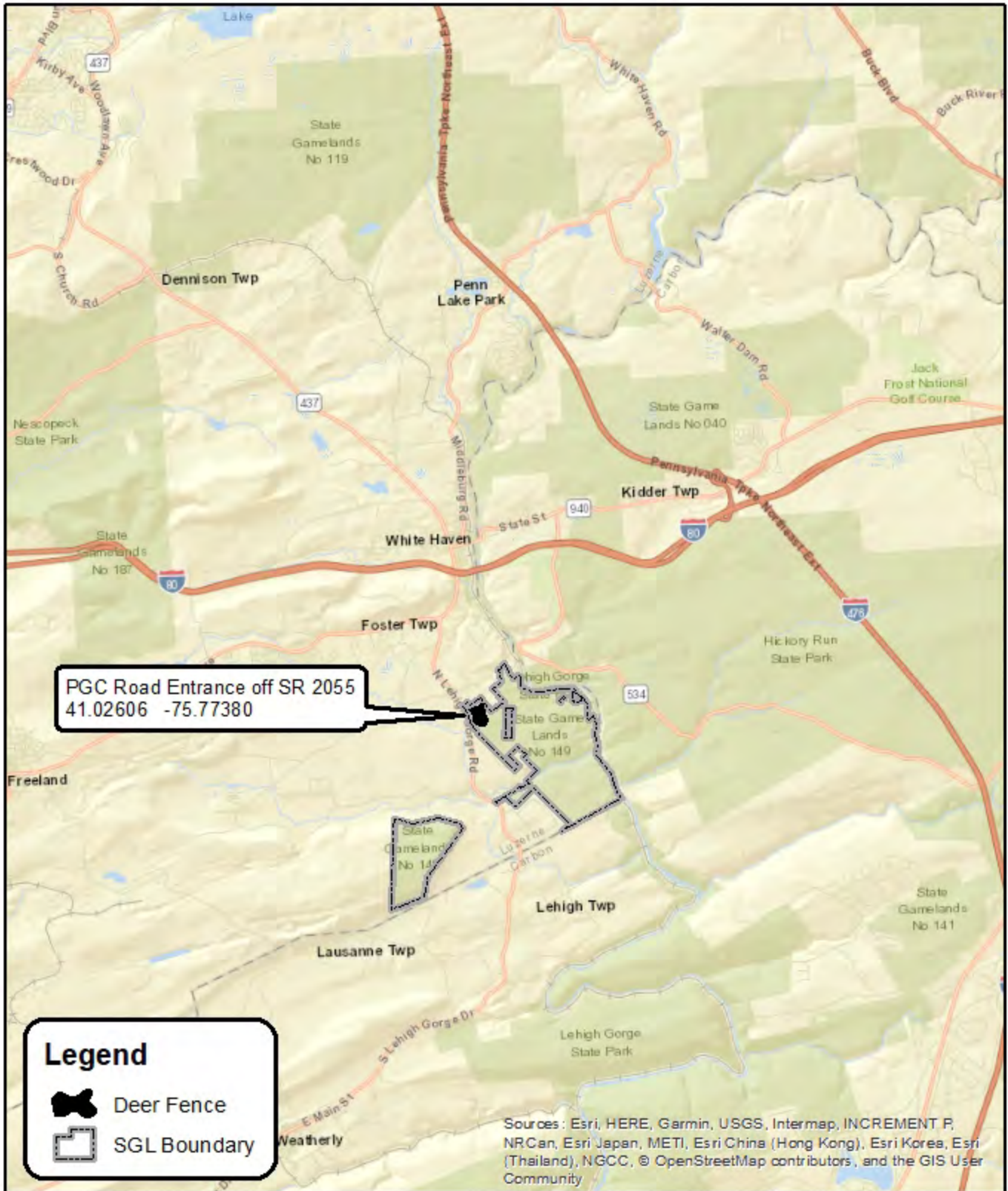
- Deer Fence
- Log Landing
- PGC Road
- NE Local Rds
- SGL Boundary





SGL 149  
Luzerne County  
Foster Township

# Tannery Timber Sale (149-01-01) Deer Fence Removal



0 1 2 4 6 8 Miles





SGL 149  
Luzerne County  
Foster Township  
Compartment 1  
Stands 19, 20

# Tannery Timber Sale (149-01-01)

## Deer Fence Removal

